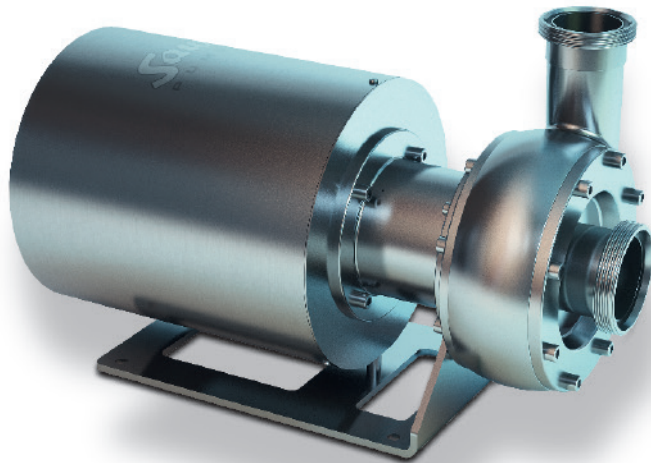


# Centrifugal pump LE/ZA



**Type LE:** The flow optimised impeller and volute allow a very silent, gentle and efficient handling of the liquids. The dead space free and hygienic design guarantees fast cleaning and complete draining.

**Type ZA:** The centrifugal pump ZA can be used to convey fluid media with viscosities up to 500 mPa s without any danger of clogging. Different impeller versions guarantee an optimum adaption to the pumped media which makes this pump type an ideal all-rounder.




## Food industry

Liquid egg, vinegar, concentrates, flavourings, vitamins, milk, cream, curd, buttermilk, sauces, cooking oil, sugar solutions, brine, spices, fatty acids, CIP, yoghurt, whey, fats, cocoa butter, liquid malt etc.



## Beverage industry

Mineral water, syrup, spirits, fruit juices (including fruit juices with pulp), wine, beer, brewer's yeast, lemon juice, alcohol, liqueur, CIP, vegetable juices, iced tea etc.



## Pharmaceuticals/cosmetics

Perfumes, emulsions, alcohols, herbal extracts, flavourings, WFI/PUW/HPW, CIP/SIP, colourants, infusion solutions, applications in bio-technology etc.

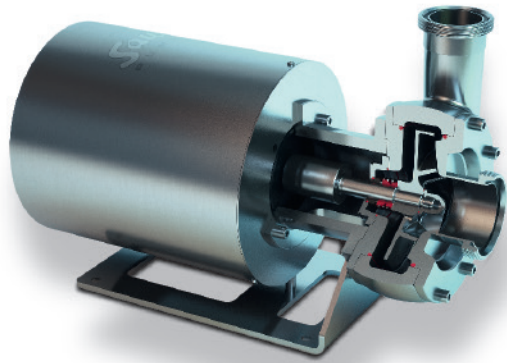


## Chemicals/industry

Lyes, acids, milk of lime, alcohols, methanol, ethanol, solvents, hydrogen peroxide, DI water, urea, glycol solutions, various applications in reverse osmosis processes, biodiesel, waste water with particles, condensates, liquid-deicing salt etc.



# The pump types for pure and solids-laden liquids



## Features:

- Flow optimised volute casing and impeller designs with high efficiencies,
- Dead space free design (hygienic design),
- Very silent operation,
- Modular design and low maintenance costs,
- Sturdy design comprising high-quality Cr-Ni-Mo stainless steel 1.4435 (316L) with electropolished surfaces,
- Pumping of solids-laden media with no risk of clogging,
- Ideal for fast temperature changes thanks to sturdy design,
- The robust design allows the handling of abrasive and corrosive media,
- All common shaft sealing systems (e.g. mechanical seals) available.

## Optional forms:

- ✓ **ATEX**  
for zones 1, 2, 21, 22
- ✓ **Pharma design**  
for maximum safety, reliability and hygiene (surface roughness down to  $R_a < 0.4 \mu\text{m}$ )
- ✓ **Magnetic coupling**  
hermetically sealed design LEM for crystallising, toxic, flammable and environmentally hazardous liquids
- ✓ **Vertical option**  
for easy draining
- ✓ **Bearing housing option**  
for special requirements
- ✓ **Inducer**  
for low NPSH<sub>a</sub> values ( $< 1 \text{ m}$ )
- ✓ **Mobile**  
version with sturdy trolley

Flow rate Q [m <sup>3</sup> /h]	max. 240
Delivery head H [m]	up to 110
Temperature range [°C]	minus 30 to 120, max. 145 (SIP)
Viscosity [mPa s]	up to 500
Nominal pressure	max. PN10 to PN100 (type LEH/ZAH)

